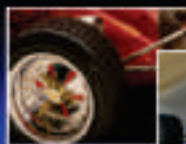


**AMERICAN  
RACER**®

Racing Tires From Race Tires America



A Division of Specialty Tires of America

C A T A L O G

# RACE TIRES AMERICA®



**WARNING:** All tires are designed to be used on wheels that are manufactured to T&RA specifications and tolerances. Use of these tires on wheels that do not meet T&RA standards can cause assembly to fail and burst with explosive force sufficient to cause serious personal injury or death.

## CONTENTS

Late Model Dirt.....	1	Mini Cup.....	4
Late Model Asphalt.....	2	Mini Modified, Mini Sprint, Mini Stock, Pro-4 Asphalt.....	5
Modified Asphalt.....	2	Micro Sprint.....	5
Road Racing 15" DIA/Formula V/Pro 4.....	2	Cage Kart.....	5
Sprint Car /Modified.....	3	D.O.T. Street Tires.....	6
Midget Dirt /Mini Stock Dirt.....	4	ATV Tires.....	7
Midget Asphalt.....	4	Tread Patterns - Race Tires.....	8,9
Formula Ford.....	4	Race Tire Distributors.....	10

## NO WARRANTY POLICY

**RACE TIRES AMERICA® ("RTA") OFFERS RACING TIRES UNDER THE AMERICAN RACER® BRAND FOR SALE UPON THE TERMS AND THE CONDITIONS CONTAINED IN THIS DISCLAIMER OF LIABILITY. BECAUSE OF THE MANY VARIED AND DIFFERENT CONDITIONS TO WHICH RACE TIRES ARE EXPOSED AND BECAUSE OF THE MANNER IN WHICH RACING IS CONDUCTED, RTA MAKES ABSOLUTELY NO WARRANTY, EXPRESSED OR IMPLIED, OF MERCHANTABILITY OR OF FITNESS FOR A GENERAL OR PARTICULAR PURPOSE IN CONNECTION WITH ANY OFFER FOR SALE OR SALE OF RACE TIRES BY RTA. ALL RACE TIRE AMERICA AMERICAN RACER RACING TIRES ARE SOLD "AS IS."**

New, unused tires exhibiting a defect in workmanship or materials, as verified by RTA's examination, will be issued a credit equal to RTA's distributor price. To qualify for a credit, the tire must have a manufacturing date within twelve (12) months of the tire's return to RTA.

**ALL AMERICAN RACER® RACING TIRES, INCLUDING "D.O.T." MARKED TIRES, ARE DESIGNED FOR RACING PURPOSES ONLY AND ARE NOT TO BE OPERATED ON PUBLIC STREETS, ROADS, OR HIGHWAYS.** American Racer "D.O.T." marked tires have passed D.O.T. minimum requirements for sidewall identification, labeling, and performance; however, racing tires have reduced skid depth or soft compounds designed for racing on dirt or asphalt closed oval tracks. Racing compounds and tread depths give reduced tread life and are not suitable for highway or street use.

## WARNING

**DO NOT, UNDER ANY CIRCUMSTANCES, MOUNT ANY AMERICAN RACER® TIRE ON A WHEEL THAT DOES NOT MEET TIRE AND RIM ASSOCIATION STANDARDS. USE OF AMERICAN RACER TIRES ON WHEELS THAT DO NOT MEET TIRE & RIM ASSOCIATION STANDARDS CAN CAUSE THE ASSEMBLY TO FAIL AND BURST WITH EXPLOSIVE FORCE SUFFICIENT TO CAUSE SERIOUS PERSONAL INJURY OR DEATH. AMERICAN RACER TIRES SOLD BY RTA ARE INTENDED TO BE USED EXCLUSIVELY ON TIRE RIMS DESIGNED AND MANUFACTURED TO COMPLY WITH TIRE & RIM ASSOCIATION (T&RA) STANDARDS AND SPECIFICATIONS.** Any person using American Racer® racing tires on wheels that do not meet T&RA standards and specifications or on damaged wheels assumes responsibility for these dangerous actions and agrees to reimburse RTA (and its affiliated companies) for all loss, damage or cost it may suffer because of such actions. Wheel standards and specifications can be obtained by writing to: **Tire & Rim Association, 175 Montrose West Avenue, Suite 150, Copley, Ohio 44321** or by consulting your rim manufacturer.

**TIRE MOUNTING INSTRUCTIONS - TIRE MOUNTING MUST BE PERFORMED BY SPECIALLY TRAINED PERSONNEL USING PROPER TOOLS AND PROCEDURES. FAILURE TO FOLLOW SAFE MOUNTING PROCEDURES CAN RESULT IN FAULTY POSITIONING OF THE TIRE AND CAUSE THE ASSEMBLY TO BURST WITH EXPLOSIVE FORCE SUFFICIENT TO CAUSE SERIOUS PERSONAL INJURY AND DEATH. CLEAN RIM AND LUBRICATE BEADS WITH RUBBER LUBRICANT. ALWAYS LOCK RIM ON MOUNTING MACHINE OR PLACE ASSEMBLY IN SAFETY CAGE. USE AIR HOSE WITH CLIP ON CHUCK AND EXTENSION AIR GAUGE. NEVER EXCEED 40 PSI TO SEAT BEADS ON RIM. EXCESSIVE AIR PRESSURE CAN DAMAGE THE TIRE AND CAUSE IT TO VIOLENTLY BLOW OFF OF THE WHEEL.**

**CHEMICALLY ALTERING TIRES** - Race Tires America® does not authorize or permit: (1) chemical alteration of the tread carcass and/or tread compound, such as tire "soaking"; (2) use of tread "softener"; or (3) the physical defacement (removal, altering or covering), of tire sidewall markings in any manner. Failure to comply with this warning could result in premature or catastrophic tire failure that may result in serious injury or death.

# RACE TIRES AMERICA®

## LATE MODEL DIRT

TIRE SIZE	TREAD TYPE	TREAD WIDTH	SECTION WIDTH	APPROX. DIA	APPROX. CIRC.	DESIGN RIM	WT.
<b>Economy</b>							
82.0/8.0-15DT	F	8.0	10.7	26.1	82	8	18.0
84.0/8.0-15DT	F	8.0	10.8	26.7	84	8	19.0
86.0/8.0-15DTN	F	9.0	10.7	27.4	86	8	18.0
27.5/8.0-15DT	F	9.0	10.7	27.4	86	8	18.0
26.0/10.5-15DT	F	10.5	13.0	27.4	86	10	20.5
26.0/10.5-15DT SH	F	10.5	13.0	27.1	85	10	20.0
27.5/11.0-15DT SH	F	11.0	15.1	27.4	86	10-12	19.0
27.5/11-15DT	F	11.0	14.3	27.7	87	12-14	19.0
28.5/11.0-15DT	F	11.0	15.0	28.2	89	12-14	20.0
29.0/11.0-15DT	F	11.0	14.7	29.3	92	12-14	21.5
27.5/11.0-15DTW	F	13.0	15.5	27.6	87	12-14	22.0
28.5/11.0-15DTW	F	13.0	15.6	28.2	89	12-14	22.5
29.0/11.0-15DTW	F	13.0	16.0	29.1	92	12-14	23.0
27.5/11.0-15DT	L	11.0	13.8	28.0	88	10-12	21.5
29.0/11.0-15DT	L	11.0	14.0	29.3	92	10-12	22.0
27.5/10.5-15G	A	10.5	14.1	27.4	86	10-12	21.0
28.5/10.5-15G	A	10.5	14.1	28.0	88	10-12	22.0
29.0/10.5-15G	A	10.5	14.4	29.3	92	10-12	23.0
27.5/10.5-15GT	B,M	10.5	14.0	27.4	86	10-12	21.0
28.5/10.5-15GT	B,M	10.5	14.0	28.0	88	10-12	22.0
29.0/10.5-15GT	B,M	10.5	14.1	29.3	92	10-12	23.0
<b>Open Competition</b>							
86.0/11.0-15GT	B	11.0	15.5	27.4	86	12-14	24.0
88.0/11.0-15GT	B	11.0	15.8	28.0	88	12-14	26.5
90.0/11.0-15GT	B	11.0	15.8	28.6	90	12-14	27.5
92.0/11.0-15GT	B	11.0	16.2	29.3	92	12-14	28.5
27.5/11.0-15GT	B	11.0	15.3	27.7	87	12-14	24.5
28.5/11.0-15GT LSW	B	11.0	15.3	28.2	89	12-14	23.5
28.5/11.0-15GT	B	11.0	15.3	28.3	89	12-14	24.5
29.0/11.0-15GT LSW	B	11.0	15.8	29.3	92	12-14	24.0
29.0/11.0-15GT	B	11.0	15.7	29.3	92	12-14	25.0
27.5/11.0-15BT	D	11.0	16.2	27.7	87	12-14	25.0
28.5/11.0-15BT	D	11.0	16.3	28.3	89	12-14	25.5
29.0/11.0-15BT	D	11.0	16.2	29.3	92	12-14	26.0
27.5/15.0-15BT	D	14.0	16.8	27.7	87	13-15	25.5
28.0/15.0-15BT	D	14.0	16.7	28.0	88	13-15	26.0
28.5/15.0-15BT	D	14.0	16.7	28.6	90	13-15	27.0
29.0/15.0-15BT	D	14.0	17.3	29.3	92	13-15	27.0
30.0/15.0-15BT	D	14.0	17.3	29.9	94	13-15	28.0
30.5/15.0-15BT	D	14.0	17.9	30.5	96	13-15	29.0

← SOFTER HARDER →  
 TYPE "L" EC-0 EC-1 EC-2 EC-3  
 TYPE "A" D-10 D-20 D-30 D-40  
 TYPE "F" SOFT MED HARD  
 SD-23 SD-28 SD-33 SD-35 SD-38 SD-44 SD-48 MD-50 MD-53 MD-56 MD-57 HD-65 HD-70

**NOTE:** All circumferences and C/L O.D.'s listed are operating measurements after break in.  
**NOTE:** All compounds are not available in all sizes. See your nearest distributor for compounds for any given size or type race tire.  
**NOTE:** American Racer® Tires are specifically designed and compounded for racing only. They are illegal for street or highway use.  
**NOTE:** Section widths (S.W.) are based on design rim width.

**WARNING: DO NOT, UNDER ANY CIRCUMSTANCES, MOUNT AN AMERICAN RACER® RACING TIRE ON A WHEEL THAT DOES NOT MEET TIRE AND RIM ASSOCIATION STANDARDS.**

### NO WARRANTY POLICY

RACE TIRES AMERICA® ("RTA") OFFERS RACING TIRES UNDER THE "AMERICAN RACER®" BRAND FOR SALE UPON THE TERMS AND THE CONDITIONS CONTAINED IN THIS DISCLAIMER OF LIABILITY. BECAUSE OF THE MANY VARIED AND DIFFERENT CONDITIONS TO WHICH RACE TIRES ARE EXPOSED AND BECAUSE OF THE MANNER IN WHICH RACING IS CONDUCTED, RTA MAKES ABSOLUTELY **NO WARRANTY**, EXPRESSED OR IMPLIED, OF MERCHANTABILITY OR OF FITNESS FOR A GENERAL OR PARTICULAR PURPOSE IN CONNECTION WITH ANY OFFER FOR SALE OR SALE OF RACE TIRES BY RTA. **ALL RACE TIRES AMERICA® AMERICAN RACER® RACING TIRES ARE SOLD "AS IS."**

New, unused tires exhibiting a defect in workmanship or materials, as verified by RTA's examination, will be issued a credit equal to RTA's distributor price. To qualify for a credit, the tire must have a manufacturing date within twelve (12) months of the tire's return to RTA.

**Independent dealers must establish their own prices.**

# RACE TIRES AMERICA®

## LATE MODEL ASPHALT

TIRE SIZE	TREAD TYPE	TREAD WIDTH	SECTION WIDTH	APPROX. DIA	APPROX. CIRC.	DESIGN RIMS	WT.
26.5/8.0-15S	S	8.0	10.8	26.1	82	8	18.5
27.0/8.0-15S	S	8.0	11.2	26.7	84	8	19.0
26.0/9.0-15SH	S	9.0	11.1	26.3	83	8-9	18.0
26.0/9.0/15	S	9.0	11.5	26.8	84	8-9	18.0
26.0/10.0-15S	S	10.0	12.9	26.2	82	10	22.0
26.5/10.0-15S	S	10.0	12.9	26.4	83	10	22.5
27.0/10.0-15S	S	10.0	13.0	26.7	84	10	23.0
27.0/10.0-15SR	S	10.0	13.1	27.4	86	10	23.5
26.5/11.5-15S	S	11.5	13.5	27.0	85	10	27.0
27.0/11.5-15S	S	11.5	13.5	27.4	86	10	28.0
27.5/9.0-15T		9.0	11.6	27.7	87	8-9	21.0
8.0/26.0-15SH	S	9.0	11.1	26.3	83	8-9	18.0
8.0/26.0-15S	S	9.0	11.5	26.8	84	8-9	18.0
10.0/26.5-15S	S	10.0	13.5	26.7	84	10	21.0
10.0/27.0-15S	S	10.0	13.8	27.4	86	10	22.0

## MODIFIED ASPHALT

TIRE SIZE	TREAD TYPE	TREAD WIDTH	SECTION WIDTH	APPROX. DIA	APPROX. CIRC.	DESIGN RIMS	WT.
23.5/10.0-15S	S	10.0	11.0	23.8	75	9-10	15.0
24.0/11.0-15S	S	11.5	12.0	24.5	77	10-11	18.0
24.5/10.0-15S	S	10.0	12.3	24.8	78	9-10	19.0
25.0/11.0-15S	S	11.0	12.6	24.8	79	9-12	20.0
25.0/13.5-15S	S	13.5	15.4	25.5	80	12-14	24.0
25.5/13.5-15S	S	13.5	15.8	26.1	82	13-15	25.0
26.0/13.5-15S	S	13.5	16.0	26.7	84	13-15	26.0
27.5/14.0-15S	S	14.0	16.6	27.7	87	14-16	28.0
27.5/17.0-15S	S	17.0	19.4	27.7	87	17-19	30.0

## ROAD RACING 15" DIA/FORMULA V/PRO 4

TIRE SIZE	TREAD TYPE	TREAD WIDTH	SECTION WIDTH	APPROX. DIA	APPROX. CIRC.	DESIGN RIMS	WT.
21.5/5.0-15S	S	4.8	5.5	21.3	67	4-5	9.5
22.0/6.0-15S	S	5.5	6.5	22.2	70	4-5	11.0
23.5/10.0-15S	S	10.0	11.0	23.8	75	9-10	15.0
25.0/11.0-15S	S	11.0	12.6	24.8	79	9-12	20.0
26.0/13.5-15S	S	13.5	15.9	26.7	84	13-15	26.0



SOFTER HARDER  
EC-82 EC-83 EC-84 EC-85 EC-86

ALSO AVAILABLE

EC-11 EC-21 EC-31 EC-41 EC-51 EC-61

M28 M30 M32 131 132

NOTE: All circumferences and C/L O.D.'s listed are operating measurements after break in.

NOTE: All compounds are not available in all sizes. See your nearest distributor for compounds for any given size or type race tire.

NOTE: American Racer® Tires are specifically designed and compounded for racing only. They are illegal for street or highway use.

NOTE: Section widths (S.W.) are based on design rim width.

**WARNING: DO NOT, UNDER ANY CIRCUMSTANCES, MOUNT AN AMERICAN RACER® RACING TIRE ON A WHEEL THAT DOES NOT MEET TIRE AND RIM ASSOCIATION STANDARDS.**

### NO WARRANTY POLICY

RACE TIRES AMERICA® ("RTA") OFFERS RACING TIRES UNDER THE "AMERICAN RACER®" BRAND FOR SALE UPON THE TERMS AND THE CONDITIONS CONTAINED IN THIS DISCLAIMER OF LIABILITY. BECAUSE OF THE MANY VARIED AND DIFFERENT CONDITIONS TO WHICH RACE TIRES ARE EXPOSED AND BECAUSE OF THE MANNER IN WHICH RACING IS CONDUCTED, RTA MAKES ABSOLUTELY **NO WARRANTY**, EXPRESSED OR IMPLIED, OF MERCHANTABILITY OR OF FITNESS FOR A GENERAL OR PARTICULAR PURPOSE IN CONNECTION WITH ANY OFFER FOR SALE OR SALE OF RACE TIRES BY RTA. **ALL RACE TIRES AMERICA® AMERICAN RACER® RACING TIRES ARE SOLD "AS IS."**

New, unused tires exhibiting a defect in workmanship or materials, as verified by RTA's examination, will be issued a credit equal to RTA's distributor price. To qualify for a credit, the tire must have a manufacturing date within twelve (12) months of the tire's return to RTA.

**Independent dealers must establish their own prices.**

# RACE TIRES AMERICA®

## SPRINT CAR DIRT/MODIFIED

TIRE SIZE	TREAD TYPE	TREAD WIDTH	SECTION WIDTH	APPROX. DIA	APPROX. CIRC.	DESIGN RIMS	WT.
26.0/7.0-15DT	F	7.0	10.1	26.4	83	6-8	16.5
26.0/8.0-15DT	F	8.0	10.8	26.7	84	6-8	17.0
26.0/9.5-15DT	F	9.5	12.1	26.7	84	8-10	18.0
27.5/15.0-15BT	D	14.0	16.8	27.7	87	13-15	25.5
28.0/15.0-15BT	D	14.0	16.7	28.0	88	13-15	26.0
28.5/15.0-15BT	D	14.0	16.7	28.7	90	13-15	26.5
29.0/15.0-15BT	D	14.0	17.1	29.3	92	13-15	27.0
30.0/15.0-15BT	D	14.0	17.5	29.9	94	13-15	28.0
30.5/15.0-15BT	D	14.0	17.4	30.6	96	13-15	29.0
28.0/15.0-15BT (Belted)	D	14.0	16.7	28.0	88	13-15	26.8
28.5/15.0-15BT (Belted)	D	14.0	16.7	28.7	90	13-15	27.2
29.0/15.0-15BT (Belted)	D	14.0	17.2	29.3	92	13-15	28.0
30.0/15.0-15BT (Belted)	D	14.0	17.5	29.9	94	13-15	28.2
30.5/15.0-15BT (Belted)	D	14.0	17.2	30.6	96	13-15	28.6
32.0/16.0-15GT	D	16.0	19.6	32.5	102	15-18	32.0
102/16.0-15GT	D	16.0	19.6	32.5	102	15-18	32.0
34.0/17.0-15GT	H	17.0	20.0	33.1	104	15-18	31.5
34.0/17.0-15GTW	H	18.5	22.1	33.6	105	17-18	31.0
34.0/18.0-15GT	E	18.0	21.1	33.1	104	16-20	32.5
34.0/18.0-15GTW	T	18.0	21.9	33.6	105	16-20	31.0
30.0/13.0-15GT	B	13.0	16.9	30.3	95	13-15	29.5
31.0/13.0-15G	A	13.0	17.2	31.2	97	13-15	30.0
32.0/13.0-15GT	D	13.0	17.4	32.1	101	13-15	28.0
33.0/13.0-15GT	D	13.0	18.2	32.8	103	13-15	32.0

← SOFTER HARDER →  
 SD-23 SD-28 SD-33 SD-35 SD-38 SD-44 SD-48 MD-50 MD-53 MD-56 MD-57 HD-65 HD-7C  
 MC-1 MC-2 MC-3

## ENTRY LEVEL (NON-D.O.T.)

TIRE SIZE	TREAD TYPE	TREAD WIDTH	SECTION WIDTH	APPROX. DIA	APPROX. CIRC.	DESIGN RIMS	WT.
70/235-15SW	HH(ASPH)	7.5	10.0	27.7	86	6-7	16.0
70/245-15SW	DD(DIRT)	7.5	10.0	28.0	88	6-7	17.0
60/215-14SW	R(ASPH)	7.0	8.5	25.3	79	6-7	14.0
60/215-14SW	R(DIRT)	7.0	8.5	25.3	79	6-7	14.0
60/215-13SW	CC(ASPH)	7.8	8.7	23.3	73	6-7	12.5
60/215-13SW	DD(DIRT)	7.8	8.7	23.3	73	6-7	12.5
70/205-15SW	F	7.5	10.8	26.5	83	6-8	16.0

**NOTE:** All circumferences and C/L O.D.'s listed are operating measurements after break in.

**NOTE:** All compounds are not available in all sizes. See your nearest distributor for compounds for any given size or type race tire.

**NOTE:** American Racer® Tires are specifically designed and compounded for racing only. They are illegal for street or highway use.

**NOTE:** Section widths (S.W.) are based on design rim width.

**WARNING: DO NOT, UNDER ANY CIRCUMSTANCES, MOUNT AN AMERICAN RACER® RACING TIRE ON A WHEEL THAT DOES NOT MEET TIRE AND RIM ASSOCIATION STANDARDS.**

### NO WARRANTY POLICY

RACE TIRES AMERICA® ("RTA") OFFERS RACING TIRES UNDER THE "AMERICAN RACER®" BRAND FOR SALE UPON THE TERMS AND THE CONDITIONS CONTAINED IN THIS DISCLAIMER OF LIABILITY. BECAUSE OF THE MANY VARIED AND DIFFERENT CONDITIONS TO WHICH RACE TIRES ARE EXPOSED AND BECAUSE OF THE MANNER IN WHICH RACING IS CONDUCTED, RTA MAKES ABSOLUTELY **NO WARRANTY**, EXPRESSED OR IMPLIED, OF MERCHANTABILITY OR OF FITNESS FOR A GENERAL OR PARTICULAR PURPOSE IN CONNECTION WITH ANY OFFER FOR SALE OR SALE OF RACE TIRES BY RTA. **ALL RACE TIRES AMERICA® AMERICAN RACER® RACING TIRES ARE SOLD "AS IS."**

New, unused tires exhibiting a defect in workmanship or materials, as verified by RTA's examination, will be issued a credit equal to RTA's distributor price. To qualify for a credit, the tire must have a manufacturing date within twelve (12) months of the tire's return to RTA.

**Independent dealers must establish their own prices.**

# RACE TIRES AMERICA®

## MIDGET DIRT/MINI STOCK DIRT

TIRE SIZE	TREAD TYPE	TREAD WIDTH	SECTION WIDTH	APPROX. DIA	APPROX. CIRC.	DESIGN RIMS	WT.
22.5/6.0-13GT	G	6.0	7.7	21.3	67	6-7	10.5
22.5/7.0-13GT	G	7.0	8.1	21.3	67	7-8	11.5
22.5/8.0-13GT	G	8.0	9.4	21.6	68	8	12.5
22.5/9.5-13GT	G	9.5	10.3	21.6	68	8-10	14.0
22.5/9.5-13GT(71)	G	9.5	10.4	22.6	71	8-10	15.0
23.5/10.0-13GT	G	10.0	11.6	23.6	74	8-10	16.5
24.0/10.0-13GT	G	10.0	12.4	24.2	76	8-10	17.0
24.5/10.0-13GT	G	10.0	12.3	24.4	76	8-10	17.5
24.5/10.0-13GTW	G	12.0	13.5	24.4	76	10-12	18.0
25.0/10.0-13GT	G	10.0	12.7	24.8	78	8-10	17.5
25.5/10.0-13GTW	G	12.0	13.5	25.5	80	10-12	19.0
26.0/12.0-13GT	G	12.0	14.0	26.1	82	10-12	20.0

## MIDGET ASPHALT

TIRE SIZE	TREAD TYPE	TREAD WIDTH	SECTION WIDTH	APPROX. DIA	APPROX. CIRC.	DESIGN RIMS	WT.
20.0/6.0-13S	S	6.0	7.4	20.1	63	5-6	8.5
20.0/8.0-13S	S	8.0	9.6	20.4	64	6-7	9.5
21.0/7.5-13S	S	7.5	8.6	21.0	66	7-8	10.5
21.0/8.5-13S	S	8.5	9.5	21.3	67	7-8	11.5
21.5/10.0-13S	S	10.0	10.0	21.8	68.5	8-10	12.5
22.5/8.0-13S	S	8.0	9.7	21.6	68	7-8	16.0
22.5/9.0-13S	S	9.0	10.1	22.0	69	8-9	17.0
9.8/22-13S	S	9.5	10.7	22.2	70	8-9	16.0
22.5/10.0-13S	S	10.0	11.4	22.6	71	8-10	17.5
23.5/10.0-13S	S	10.0	12.7	23.6	74	9-10	18.0
23.5/12.0-13S	S	12.0	14.4	23.6	74	10-12	19.0

## FORMULA FORD

TIRE SIZE	TREAD TYPE	TREAD WIDTH	SECTION WIDTH	APPROX. DIA	APPROX. CIRC.	DESIGN RIMS	WT.
20.0/6.0-13S	S	6.0	7.2	20.4	64	6	10.5
22.5/7.5-13S	S	7.5	9.5	22.3	70	6	14.5

## MINI CUP

TIRE SIZE	TREAD TYPE	TREAD WIDTH	SECTION WIDTH	APPROX. DIA	APPROX. CIRC.	DESIGN RIMS	WT.
15.0/6.0-8S	S	6.0	7.5	15.3	48	6-7	5.5
15.0/7.0-8S	S	7.0	8.2	15.3	48	7-8	6.5
15.0/8.0-8S	S	8.0	9.7	15.6	49	7-8	7.5

← SOFTER HARDER →  
SD-23 SD-28 SD-33 SD-35 SD-38 SD-44 SD-48 MD-50 MD-53 MD-56 MD-57 HD-65 HD-70  
M-26 M-28 M-30 M-31 M-32 M-33

- NOTE:** All circumferences and C/L O.D.'s listed are operating measurements after break in.  
**NOTE:** All compounds are not available in all sizes. See your nearest distributor for compounds for any given size or type race tire.  
**NOTE:** American Racer® Tires are specifically designed and compounded for racing only. They are illegal for street or highway use.  
**NOTE:** Section widths (S.W.) are based on design rim width.

**WARNING: DO NOT, UNDER ANY CIRCUMSTANCES, MOUNT AN AMERICAN RACER® RACING TIRE ON A WHEEL THAT DOES NOT MEET TIRE AND RIM ASSOCIATION STANDARDS.**

### NO WARRANTY POLICY

RACE TIRES AMERICA® ("RTA") OFFERS RACING TIRES UNDER THE "AMERICAN RACER®" BRAND FOR SALE UPON THE TERMS AND THE CONDITIONS CONTAINED IN THIS DISCLAIMER OF LIABILITY. BECAUSE OF THE MANY VARIED AND DIFFERENT CONDITIONS TO WHICH RACE TIRES ARE EXPOSED AND BECAUSE OF THE MANNER IN WHICH RACING IS CONDUCTED, RTA MAKES ABSOLUTELY **NO WARRANTY**, EXPRESSED OR IMPLIED, OF MERCHANTABILITY OR OF FITNESS FOR A GENERAL OR PARTICULAR PURPOSE IN CONNECTION WITH ANY OFFER FOR SALE OR SALE OF RACE TIRES BY RTA. **ALL RACE TIRES AMERICA® AMERICAN RACER® RACING TIRES ARE SOLD "AS IS."**

New, unused tires exhibiting a defect in workmanship or materials, as verified by RTA's examination, will be issued a credit equal to RTA's distributor price. To qualify for a credit, the tire must have a manufacturing date within twelve (12) months of the tire's return to RTA.

**Independent dealers must establish their own prices.**

# RACE TIRES AMERICA®

## MINI MODIFIED, MINI SPRINT, MINI STOCK, PRO-4 ASPHALT

TIRE SIZE	TREAD TYPE	TREAD WIDTH	SECTION WIDTH	APPROX. DIA	APPROX. CIRC.	DESIGN RIMS	WT.
20.0/8.0-13S	S	8.0	9.6	20.4	64	6-7	9.5
21.0/7.5-13S	S	7.5	8.6	21.0	66	7-8	10.5
21.0/8.5-13S	S	8.5	9.5	21.3	67	7-8	11.5
22.5/8.0-13S	S	8.0	9.7	21.6	68	7-8	16.0
22.5/9.0-13S	S	9.0	10.1	22.0	69	8-9	17.0
22.5/10.0-13S	S	10.0	11.5	22.6	71	9-10	16.0
23.5/7.5-13S	S	7.5	9.8	23.6	74	7	14.5
23.5/10.0-13S	S	10.0	11.3	23.6	74	9-12	16.0
23.5/10.0-15S	S	10.0	11.0	23.8	75	9-10	15.0
26.0/8.0-15SH	S	8.0	10.8	26.1	82	8	18.5

## MICRO SPRINT

TIRE SIZE	TREAD TYPE	TREAD WIDTH	SECTION WIDTH	APPROX. DIA	APPROX. CIRC.	DESIGN RIMS	WT.
18.0/6.0-10GT	G	6.0	7.9	18.1	57	5-6	8.0
18.0/8.0-10GT	G	8.0	9.4	18.1	57	6-8	9.0
18.0/10.0-10GT	G	10.0	11.0	18.5	59	8-10	11.0
19.0/8.0-10GT	G	8.0	10.1	19.1	60	6-8	10.0
19.0/10.0-10GT	G	10.0	11.7	19.4	61	8-10	11.5
20.0/8.0-10GT	G	8.0	10.1	20.1	63	6-8	10.0
20.0/10.0-10GT	G	10.0	12.1	20.1	63	8-10	12.0
20.5/10.0-10GT	G	10.0	12.1	20.7	65	8-10	12.5
20.5/10.0-10GTW	G	11.0	12.3	21.0	66	10	13.0
21.0/10.0-10GT	G	10.0	11.8	21.3	67	8-10	12.5
21.0/10.0-10GTW	G	11.0	12.3	21.6	68	10	13.0
21.5/10.0-10GTW	G	12.0	12.9	22.1	69.5	10	14.0
70.0/13.0-10GTW	G	13.5	15.0	22.1	69.5	13-15	16.0

## CAGE KART

TIRE SIZE	TREAD TYPE	TREAD WIDTH	SECTION WIDTH	APPROX. DIA	APPROX. CIRC.	DESIGN RIMS	WT.
16.0/8.5-8GT	C	8.5	10.2	16.2	51	8	9.0

← SOFTER HARDER →  
 SD-23 SD-28 SD-33 SD-35 SD-38 SD-44 SD-48 MD-50 MD-53 MD-56 MD-57 HD-65 HD-70  
 M-26 M-28 M-30 M-31 M-32 M-33

**NOTE:** All circumferences and C/L O.D.'s listed are operating measurements after break in.

**NOTE:** All compounds are not available in all sizes. See your nearest distributor for compounds for any given size or type race tire.

**NOTE:** American Racer® Tires are specifically designed and compounded for racing only. They are illegal for street or highway use.

**NOTE:** Section widths (S.W.) are based on design rim width.

**WARNING: DO NOT, UNDER ANY CIRCUMSTANCES, MOUNT AN AMERICAN RACER® RACING TIRE ON A WHEEL THAT DOES NOT MEET TIRE AND RIM ASSOCIATION STANDARDS.**

### NO WARRANTY POLICY

RACE TIRES AMERICA® ("RTA") OFFERS RACING TIRES UNDER THE "AMERICAN RACER®" BRAND FOR SALE UPON THE TERMS AND THE CONDITIONS CONTAINED IN THIS DISCLAIMER OF LIABILITY. BECAUSE OF THE MANY VARIED AND DIFFERENT CONDITIONS TO WHICH RACE TIRES ARE EXPOSED AND BECAUSE OF THE MANNER IN WHICH RACING IS CONDUCTED, RTA MAKES ABSOLUTELY ***NO WARRANTY***, EXPRESSED OR IMPLIED, OF MERCHANTABILITY OR OF FITNESS FOR A GENERAL OR PARTICULAR PURPOSE IN CONNECTION WITH ANY OFFER FOR SALE OR SALE OF RACE TIRES BY RTA. ***ALL RACE TIRES AMERICA® AMERICAN RACER® RACING TIRES ARE SOLD "AS IS."***

New, unused tires exhibiting a defect in workmanship or materials, as verified by RTA's examination, will be issued a credit equal to RTA's distributor price. To qualify for a credit, the tire must have a manufacturing date within twelve (12) months of the tire's return to RTA.

**Independent dealers must establish their own prices.**

# RACE TIRES AMERICA®

## D.O.T. STREET TIRES

SIZE & TYPE	TYPE	T&RA APPROVED RIMS	RIM WIDTHS	C/L O.D.	S.W.	T.A.W.	CIRC.	WT.
P215/60D-13(4)	CC	B	6-7	23.6	8.7	6.5	74	15.0
P215/60D-13(4)	EE	B	6-7	22.9	8.5	6.5	72	15.0
P235/60D-13(4)	CC	B	7-8	23.8	9.5	7.5	75	16.0
P235/60D-13SH(4)	CC	B	7-8	23.2	9.5	7.5	73	16.0
G-60-15(4)	BB	J	7-8	26.4	10.0	8.0	83	20.0
G-60-15SH(4)	BB	J	7-8	26.0	10.0	8.0	82	20.0
L-60-15(4)	BB	J	7-8	27.7	10.8	9.5	87	22.0
P295/50D-15(4)	BB	J	9-10	26.7	12.2	10.0	84	22.5
P225/70D-15SH(4)	GG	J	6-7	26.8	9.1	7.0	84	20.0
P225/70D-15(4)	GG	J	6-7	27.0	9.1	7.0	85	20.0
P225/70D-15(4)	HH	J	6-7	27.0	9.5	7.3	85	19.0
P235/70D-15(4)	HH	J	6-7	27.7	10.0	7.5	86	20.0
P245/70D-15(4)	CC	J	7-8	27.7	10.2	7.0	87	21.0
P245/70D-15(4)	DD	J	7-8	27.7	9.9	7.0	87	20.0
P265/60D-15(4)	CC	J	7-9	28.0	11.0	7.5	88	21.0
P265/60D-15(4)	DD	J	7-9	28.0	10.7	8.0	88	22.0
P265/60D-15SH(4)	DD	J	7-9	27.7	10.9	7.5	87	21.0
P265/60D-15(4)	GG	J	7-9	27.4	10.5	8.0	86	22.5
P265/60-15 SH(4)	GG	J	7-9	27.1	10.6	8.0	85	22.0
P285/60D-15(4)	CC	J	8-10	28.3	11.7	9.0	89	23.0
P285/60D-15(4)	DD	J	8-10	28.3	11.7	9.5	89	23.0
P285/60D-15SH(4)	DD	J	8-10	27.7	11.7	9.5	87	23.0
P285/60D-15(4)	GG	J	8-10	27.7	11.6	10.0	87	25.0
P285/60D-15SH(4)	GG	J	8-10	27.4	11.7	10.0	86	25.0
P285/65D-15(4)	FF	J	8-10	29.3	11.6	8.5	92	23.0
P305/60D-15(4)	FF	J	9-10	29.3	12.6	10.0	92	25.0
P305/60D-15SH(4)	FF	J	9-10	28.6	12.8	10.0	90	25.0

Compounds Available: Asphalt, Dirt

There are other compounds D.O.T. approved. Check with your distributor for special requirements.

Note: American Racer/McCreary D.O.T. Street Tires are designed to be used on rims that meet T&RA specifications and tolerances.

**NOTE:** All circumferences and C/L O.D.'s listed are operating measurements after break in.

**NOTE:** All compounds are not available in all sizes. See your nearest distributor for compounds for any given size or type race tire.

**NOTE:** American Racer® Tires are specifically designed and compounded for racing only. They are illegal for street or highway use.

**NOTE:** Section widths (S.W.) are based on design rim width.

**WARNING: DO NOT, UNDER ANY CIRCUMSTANCES, MOUNT AN AMERICAN RACER® RACING TIRE ON A WHEEL THAT DOES NOT MEET TIRE AND RIM ASSOCIATION STANDARDS.**

### NO WARRANTY POLICY

RACE TIRES AMERICA® ("RTA") OFFERS RACING TIRES UNDER THE "AMERICAN RACER®" BRAND FOR SALE UPON THE TERMS AND THE CONDITIONS CONTAINED IN THIS DISCLAIMER OF LIABILITY. BECAUSE OF THE MANY VARIED AND DIFFERENT CONDITIONS TO WHICH RACE TIRES ARE EXPOSED AND BECAUSE OF THE MANNER IN WHICH RACING IS CONDUCTED, RTA MAKES ABSOLUTELY NO WARRANTY, EXPRESSED OR IMPLIED, OF MERCHANTABILITY OR OF FITNESS FOR A GENERAL OR PARTICULAR PURPOSE IN CONNECTION WITH ANY OFFER FOR SALE OR SALE OF RACE TIRES BY RTA. ALL RACE TIRES AMERICA® AMERICAN RACER® RACING TIRES ARE SOLD "AS IS."

New, unused tires exhibiting a defect in workmanship or materials, as verified by RTA's examination, will be issued a credit equal to RTA's distributor price. To qualify for a credit, the tire must have a manufacturing date within twelve (12) months of the tire's return to RTA.

ALL AMERICAN RACER® RACING TIRES, INCLUDING "D.O.T." MARKED TIRES, ARE DESIGNED FOR RACING PURPOSES ONLY AND ARE NOT TO BE OPERATED ON PUBLIC STREETS, ROADS, OR HIGHWAYS, American Racer® "D.O.T." marked tires have passed D.O.T. minimum requirements for sidewall identification, labeling, and performance; however, racing tires have reduced skid depth or soft compounds designed for racing on dirt or asphalt closed oval tracks. Racing compounds and tread depths give reduced tread life and are not suitable for highway or street use.

**Independent dealers must establish their own prices.**

# ATV TRAILBREAKER®

CHEVRON

AWD

TRAILBREAKER



## TRAILBREAKER®

SIZE	PRODUCT CODE	TREAD DEPTH	OVERALL DIAMETER	TREAD WIDTH	MAXIMUM INFLATION	WEIGHT	PRICE
AT 22X12.50-8	J88J6	26/32	22.00	10.5	7	23	
AT 22X12.50-9	J88J7	26/32	22.00	10.5	7	22	
AT 22X12.50-10	J88J8	26/32	22.00	10.5	7	23	
AT 25X13.50-9	J88JT	26/32	25.00	10.5	7	27	
AT 25X13.50-10	J88JW	26/32	25.00	10.5	7	29	
AT25X12.50-11	J88JX	26/32	25.00	10.5	7	28	
AT 25X12.50-12	J88JY	26/32	25.00	10.5	7	26	
AT 26X12.0-10	J88TW	26/32	26.00	10.5	7	28	
AT 26X12.0-11	J88RA	26/32	26.00	10.5	7	26	
AT 26X12.0-12	J88RB	26/32	26.00	10.5	7	27	

## TRAILBREAKER® AWD

SIZE	PRODUCT CODE	TREAD DEPTH	OVERALL DIAMETER	TREAD WIDTH	MAXIMUM INFLATION	WEIGHT	PRICE
AT 24X9.0-10	J88RJ	26/32	24.00	8.0	7	22	
AT 24X9.0-11	J88PJ	26/32	24.00	8.0	7	22	
AT 25X9.5-9	J88RK	26/32	25.00	8.5	7	23	
AT 25X9.5-10	J88PA	26/32	25.00	8.5	7	23	
AT 25X9.5-11	J88PB	26/32	25.00	8.5	7	22	
AT 25-9.5-12	J88PC	26/32	25.00	8.5	7	22	
AT 26-9.5-10	J88RD	26/32	26.00	8.5	7	23	
AT 26-9.5-11	J88WE	26/32	26.00	8.5	7	22	
AT 26X9.5-12	J88WF	26/32	26.00	8.5	7	22	

## TRAILBREAKER® CHEVRON

SIZE	PRODUCT CODE	TREAD DEPTH	OVERALL DIAMETER	TREAD WIDTH	MAXIMUM INFLATION	WEIGHT	PRICE
AT 26X12-12	JHFRB	23/32	26.00	10.5	7	23	



**BB**



**CC**



**DD**



**EE**



**FF**



**GG**



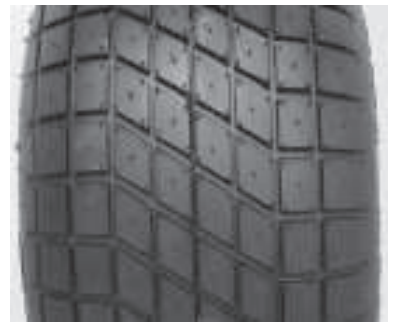
**HH**



**A**



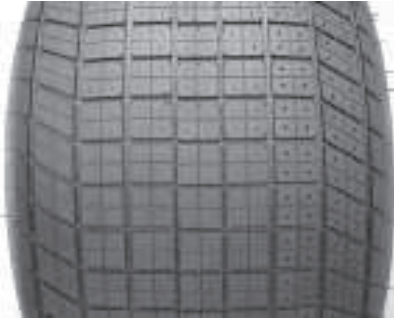
**B**



**C**



**D**



**E**



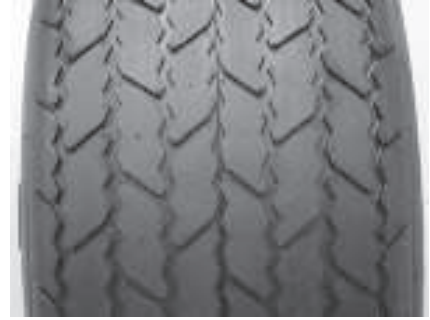
**F**



**G**



**H**



**L**



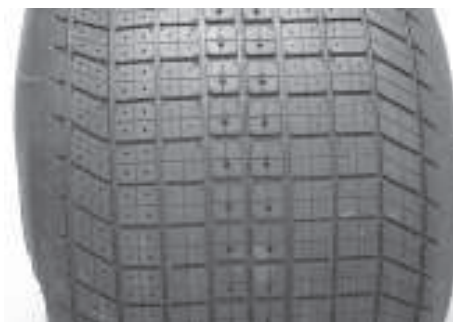
**M**



**R**



**S**



**T**

# RACE TIRES AMERICA® DISTRIBUTORS

CALL THE DISTRIBUTOR NEAREST YOU FOR PRICES, RECOMMENDATIONS AND DEALER INQUIRES

Boubin Tire Company  
Independence, **Iowa**  
319-334-6058  
800-722-3847  
FAX 319-334-4517 Office  
FAX 319-334-6968 Warehouse  
E-mail troy701@boubin.com  
Website www.boubin.com

Tony Rose  
Authorized agent for  
**Kentucky and Indiana**  
317-823-2475  
E-mail american\_tireman@yahoo.com

Lias Tire, Inc.  
Indiana, **Pennsylvania**  
724-463-0214  
800-638-7028  
FAX 724-463-1433  
E-mail liastire@hotmail.com  
Website www.liastire.com

Jack McCoy Enterprises, Inc.  
Modesto, **California**  
209-521-5656  
FAX 209-527-0042  
E-mail mccoys@netfeed.com

Harris Race Car Parts, Ltd.  
12 Bancroft Cres, Glendene  
Auckland 7, **New Zealand**  
649-818-9991  
0800-366-225  
FAX 649-818-2108  
E-mail hcrp@ihug.co.nz

American Tire & Racing Services  
Unit 11, 62 Newton Road  
Wetherill Park, **Australia**  
610-29-756-6001  
FAX 610-29-756-6008  
E-mail mark@AMERICANracingtires.com

Day Motorsports Inc.  
Tyler, **Texas**  
1-800-543-6238  
903-593-9815  
FAX 903-593-8453  
E-mail info@daymotorsports.com  
Website www.daymotorsports.com

Dave Lind Racing  
Norfolk, **Massachusetts**  
508-384-3140  
800-562-9527  
FAX 508-384-7240  
E-mail DLRT5@aol.com

Michigan Race Tire Warehouse  
Adrian, **Michigan**  
517-265-6411  
FAX 517-263-2753  
E-mail mrtw@Frontiernet.net

Jimmy Smith Racing Tires, Inc.  
Marietta, **Georgia**  
770-924-9525  
FAX 770-924-8162  
E-mail americanjsrtf44@aol.com  
Website www.jimmysmithracingtires.net

Race Car Product Sales, Ltd.  
Coaldale, **Alberta, Canada**  
403-345-4726  
FAX 403-345-3929  
E-mail parts@racecarproducts.ca  
Website www.racecarproducts.ca

Grisdale Racing Products  
Dundas, **Ontario, Canada**  
905-627-0224  
Fax 905-627-1119  
E-mail tj@grisdale.com  
Website www.grisdale.com

Race Tires America®  
1545 Washington Street  
Indiana, PA 15701  
724-349-7210  
Fax 724-349-6497  
E-mail rta992@hhs.net

**Please visit our Website [www.americanraceonline.com](http://www.americanraceonline.com)**